

# Non-invasive breath analysis for the detection of gastrointestinal disorders with the Gastrol<sup>yz</sup>er<sup>®</sup> range



CE  
0086



*Helping to detect gastrointestinal disorders, one breath at a time.*

[www.bedfont.com](http://www.bedfont.com)



## Hydrogen Breath Testing (HBT)

HBT is a non-invasive, and specific means of diagnosing small bowel sugar malabsorption. HBT makes use of gut bacteria's ability to digest sugars and convert these to hydrogen, which is then absorbed into the blood and can be measured in exhaled breath<sup>1</sup>.

The test is commonly used in paediatric and adult gastroenterology departments to diagnose malabsorption of the sugars lactose, fructose and sucrose. It is also used to investigate small intestinal bacterial overgrowth (SIBO)<sup>2</sup>.

The Gastrolzyer® range is world renowned for delivering accurate hydrogen breath testing, cited by clinical leaders in gastroenterology, such as Robert Heuschkel<sup>3</sup> and Way Seah Lee<sup>4</sup>.



*Portable breath hydrogen monitoring to help diagnose gastrointestinal disorders.*



Aids in the detection of:

Food  
intolerances

Irritable  
Bowel  
Syndrome  
(IBS)

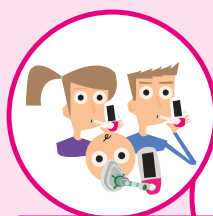
Small  
Intestinal  
Bacterial  
Overgrowth  
(SIBO)

**FREE**

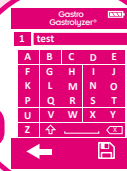
**GastroCHART™**  
software

### Ideal for:

- Gastroenterologists
- Gastro paediatricians
- Dieticians
- GP's
- Endoscopy departments



Multiple patient testing



Create and save  
patient details



Built in testing protocol

The easy to use, complete breath hydrogen monitor with 2 sampling modes.

### Face mask sampling system

This sampling system is recommended for use with younger or older patients who are unable to cooperate with the test. The Gastro™ is attached to a face mask, which is then placed over the mouth and nose of the patient. Once 'face mask' mode is selected, the Gastro™ will take a real-time reading until the result stabilises. The reading is then held on the screen and can then be saved to a patient profile, downloaded to the GastroCHART™ database or recorded manually.



### Mouthpiece sampling system

This sampling system is recommended for use with adults or patients able to hold their breath for a short period of time. The patient takes a deep breath in, holds, then exhales slowly through a mouthpiece. Within 45 seconds their result will be displayed on the screen and can then be saved to a patient profile, downloaded to the GastroCHART™ database or recorded manually.



## Features and benefits

- Brand new, easy to use interface
- Maintenance reminders
- Only needs calibrating quarterly
- Create and store patient details
- Multiple patient testing
- Built in testing protocols with built in countdown timer
- Large touchscreen
- SteriTouch® technology for improved infection control
- Comes with GastroCHART™ software



## Technical specification:

Concentration range	0-500ppm
Display	Full colour touchscreen
Detection principle	Electrochemical sensor
Repeatability	<5%
Accuracy	≤±3ppm/10% - whichever is greater*
Power	3 x AA (LR6 or equivalent) – up to 1000 minutes 1 x CR2032 Lithium coin cell
T <sub>90</sub> response time	<40 seconds
Operating temperature	15-35°C
Storage/transport temperature	0-50°C
Operating/storage/transport pressure	Atmospheric ±10%
Operating humidity	15-90% non-condensing
Storage/transport humidity	0-95%
Sensor operating life	2 years
Sensor sensitivity	1ppm
Sensor drift	<2% per month
Dimensions	Approx. 37 x 77 x 140mm
Weight	Approx. 215g (including batteries)
Materials	Case: polycarbonate/ABS blend SteriTouch® anti-microbial additive D-piece™: polypropylene SteriBreath™: polypropylene OneBreath Mouthpiece: polypropylene
CO cross interference	<4%

\* Readings of >200ppm at temperature between 26-35°C can decrease accuracy to 15%.

# Join the **Gastrolyzer®** forum today

**Did you know purchasing this product entitles you to free membership of the Gastrolyzer® email forum...**

What is the Gastrolyzer® email forum?

It is an international, invitation only forum where professionals using the Bedfont® Gastrolyzer® range of monitors can communicate and share knowledge.

There is no cost or obligation to participate but membership is free when you purchase a Bedfont® Gastrolyzer® Gastro<sup>+</sup>™ or GastroCH<sub>4</sub>ECK® - take advantage and join this elite group today!

For more information, please contact [forums@bedfont.com](mailto:forums@bedfont.com).



## How does it work?

Signing up is simple and only requires your full name and email address. We will then contact you for your Gastrolyzer® serial number.

Email [forums@bedfont.com](mailto:forums@bedfont.com) for more information.

**Call on 01622 851122 or email [ask@bedfont.com](mailto:ask@bedfont.com)**



Contact Bedfont® or one of our worldwide **Gastrolyzer®** distributors for a free demonstration.

[www.bedfont.com](http://www.bedfont.com)  
Tel: +44 (0)1622 851122  
E-mail: [ask@bedfont.com](mailto:ask@bedfont.com)

A full list of our worldwide distributors can be found at  
[www.bedfont.com/distributors/](http://www.bedfont.com/distributors/)

***Our family, innovating health, for yours.***

**Bedfont® Scientific Ltd.**

Station Road, Harrietsham, Maidstone, Kent,  
ME17 1JA, England  
Tel: +44 (0)1622 851122. Fax: +44 (0)1622 854860  
Email: [ask@bedfont.com](mailto:ask@bedfont.com)  
[www.bedfont.com](http://www.bedfont.com)

© Bedfont® Scientific Limited 2019

Issue - 3 February 2019, Part No: MKT151\_AX  
Bedfont® Scientific Limited reserve the right to change or update this literature without prior notice.  
Registered in: England and Wales. Registered No: 1289798

